

Service mode LED

1. To enter service mode, push 3 buttons simultaneously until binary code is visible

2. Then calculate or read in the table which error you see.

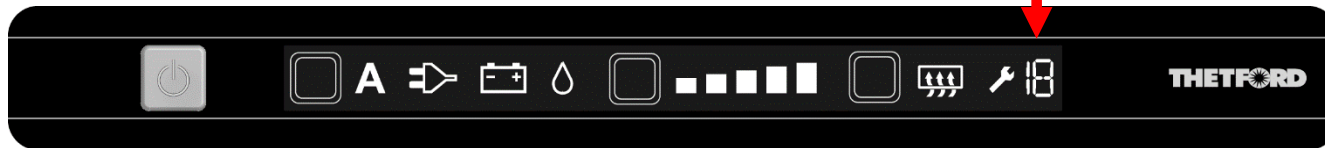


!!! Note : When supply voltage 12 VDC (low current voltage) is not available, no error code will be given. When 12 VDC is available the green power LED will be on. If battery pack is empty you can see a red light !!!

Readout Code - LED Display	Error Code
	No Error Code
	1
	2
	3
	4
	5
	6
	7
	8
	9
	10
	11
	12
	13
	14
	15
	16

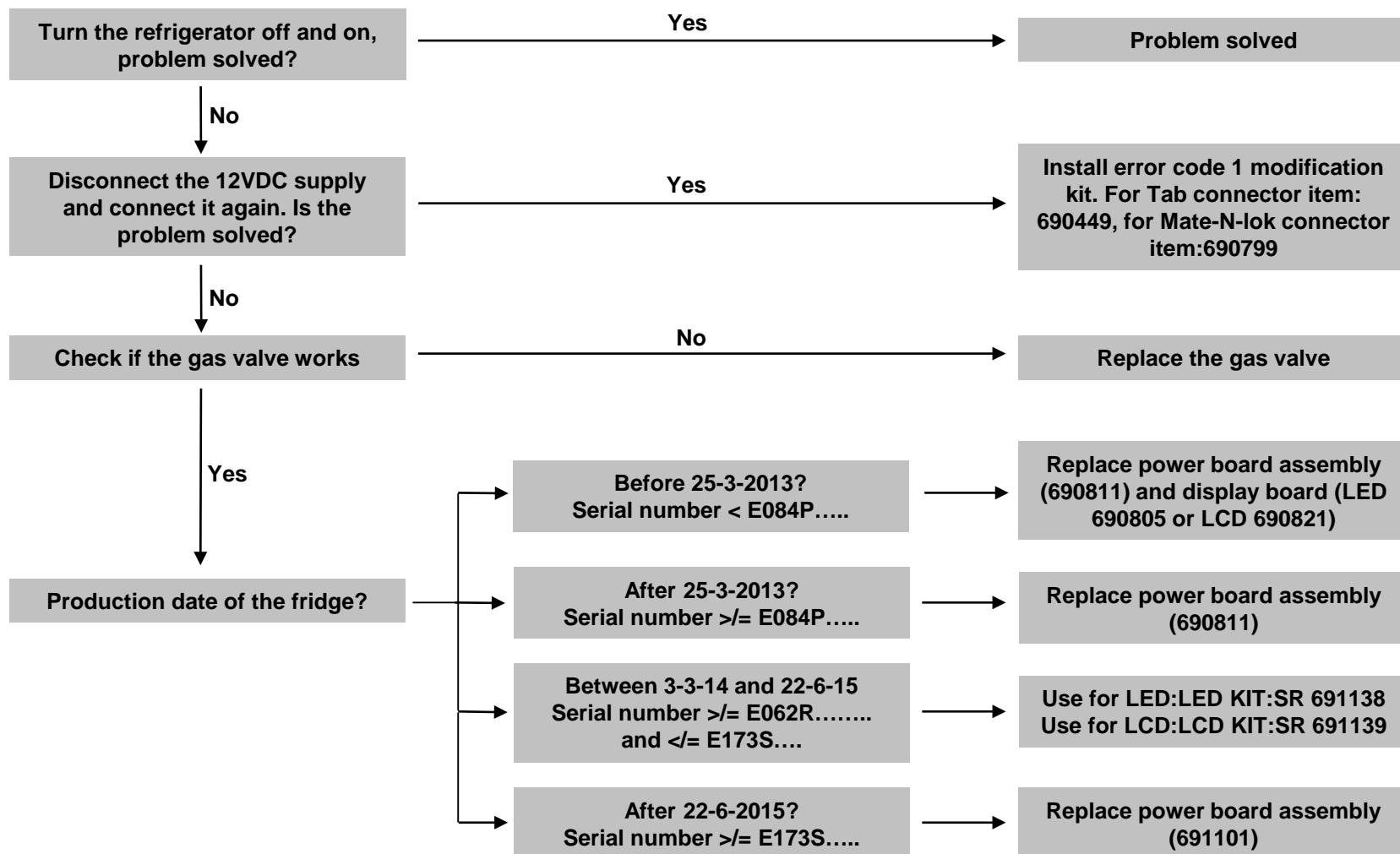
Service mode LCD

The error code will appear in the display over here.

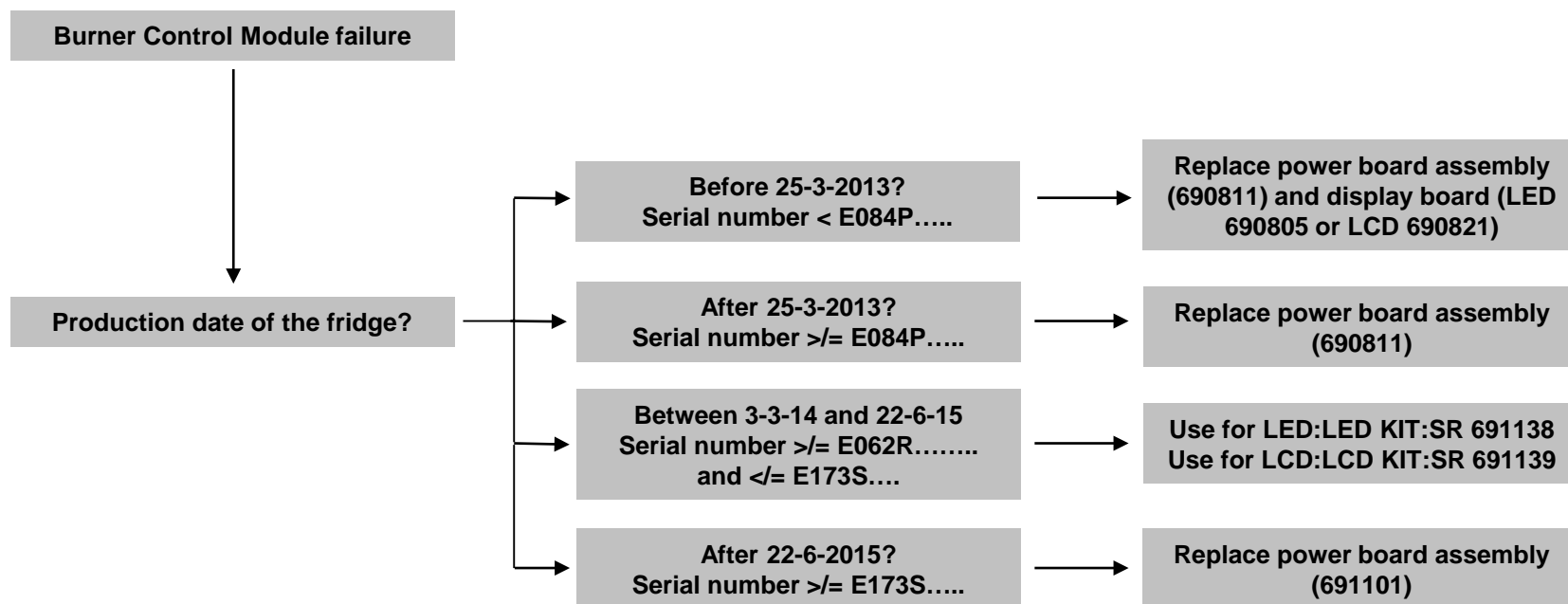


!!! Note : When supply voltage 12 VDC (low current voltage) is not available, no error code will be given. When 12 VDC is available the green power LED will be on !!!

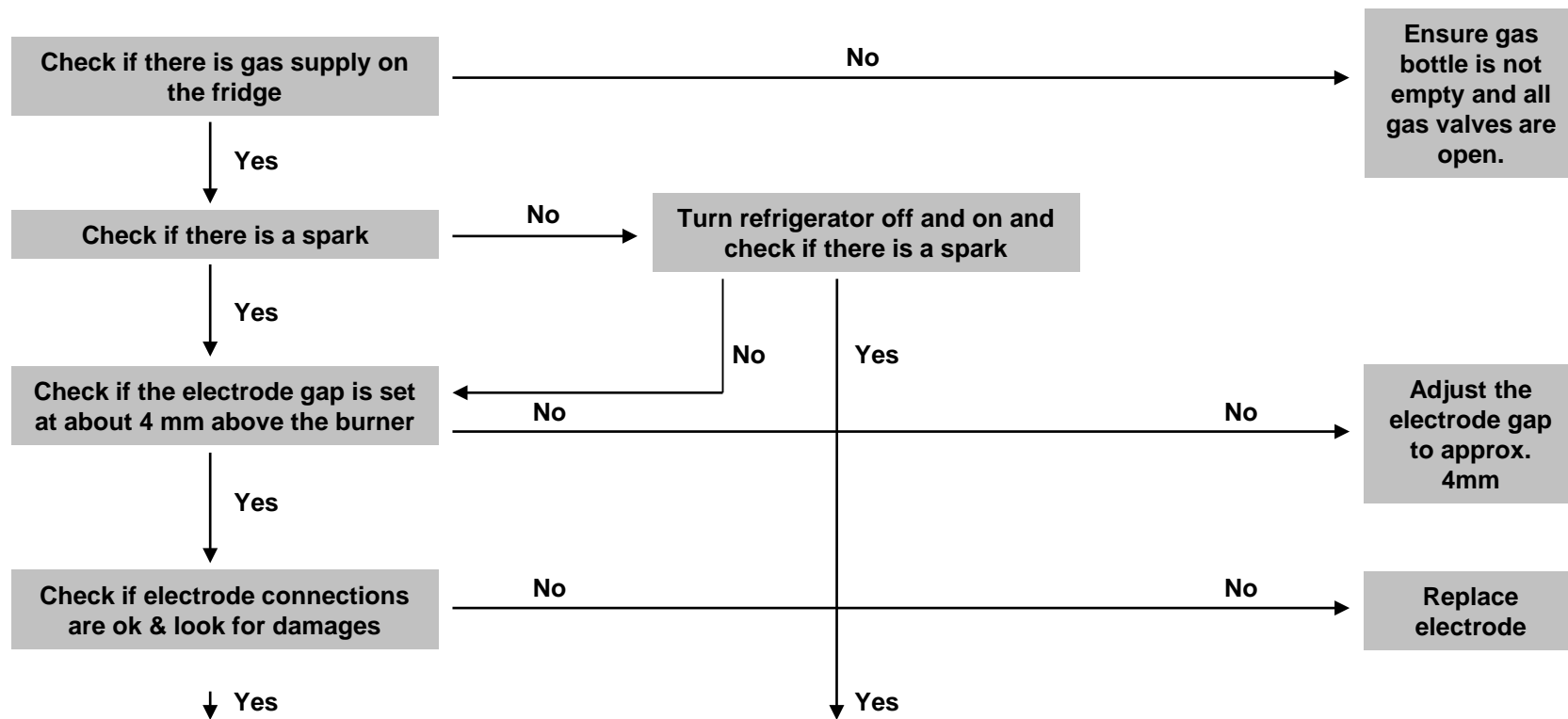
Error code 1: Senses flame when gas should be off



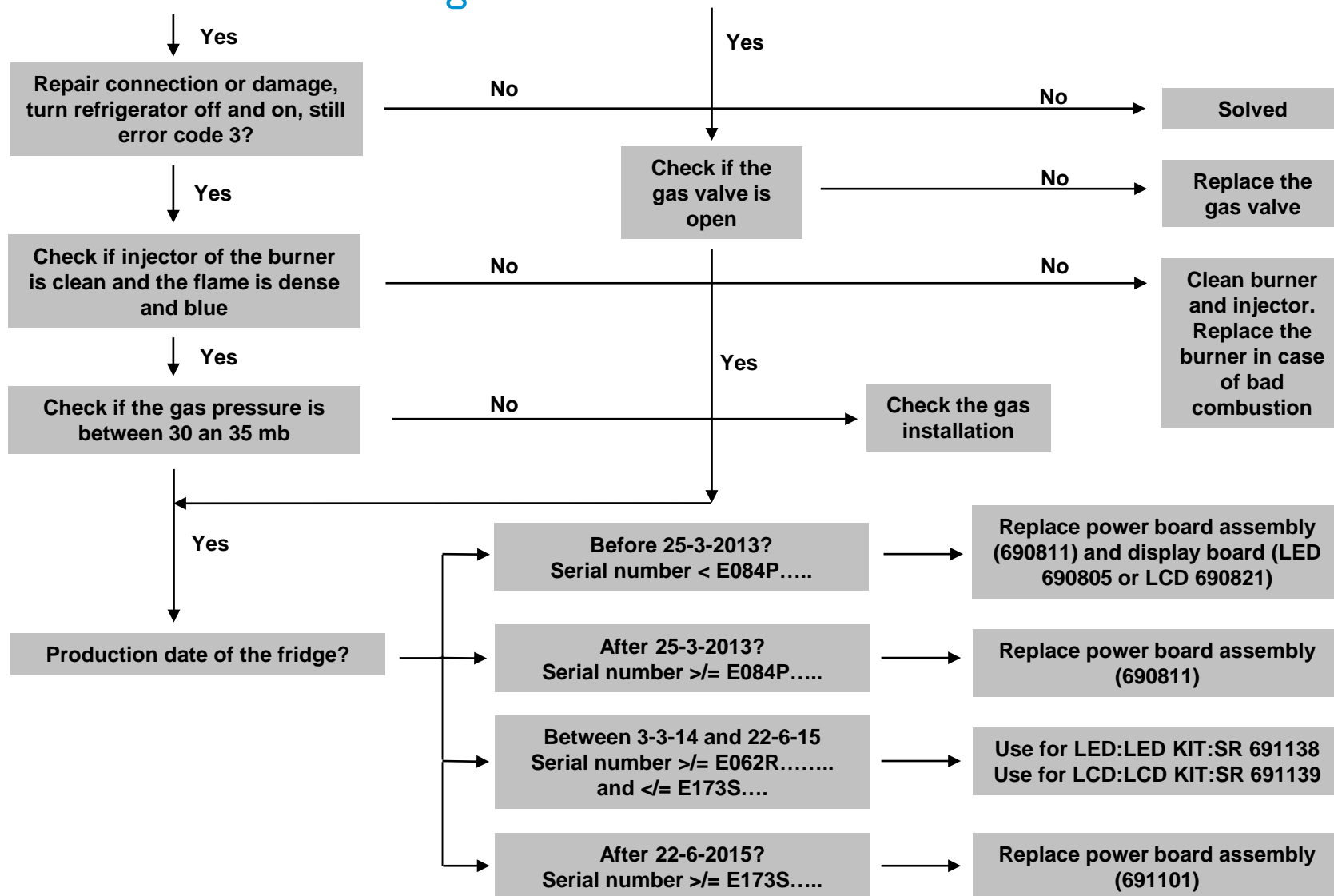
Error code 2: Burner control module returns incorrect feedback.



Error code 3: Gas lockout because flame fails to ignite within 30 sec.



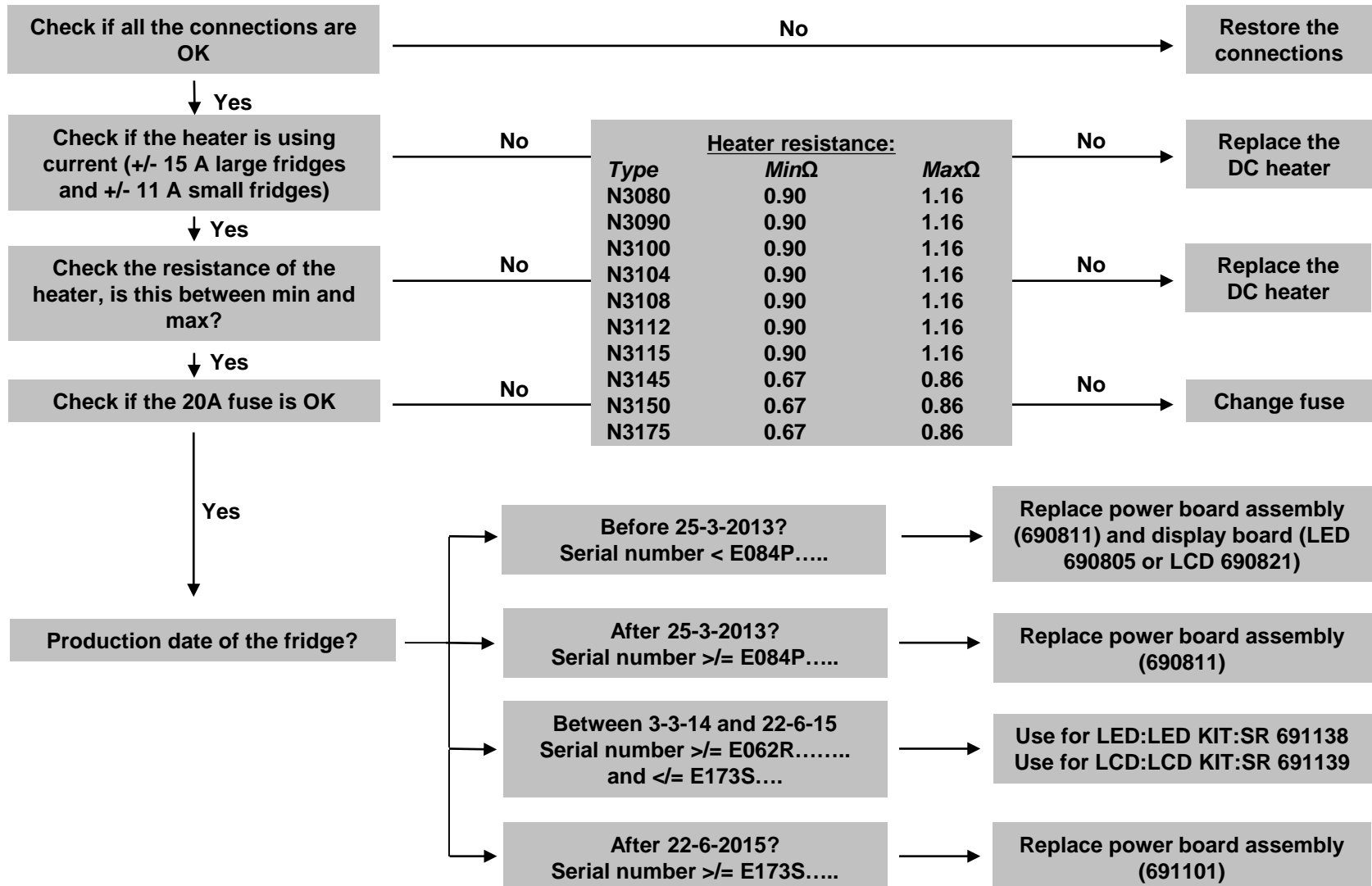
Error code 3: Gas lockout because flame fails to ignite within 30 sec.



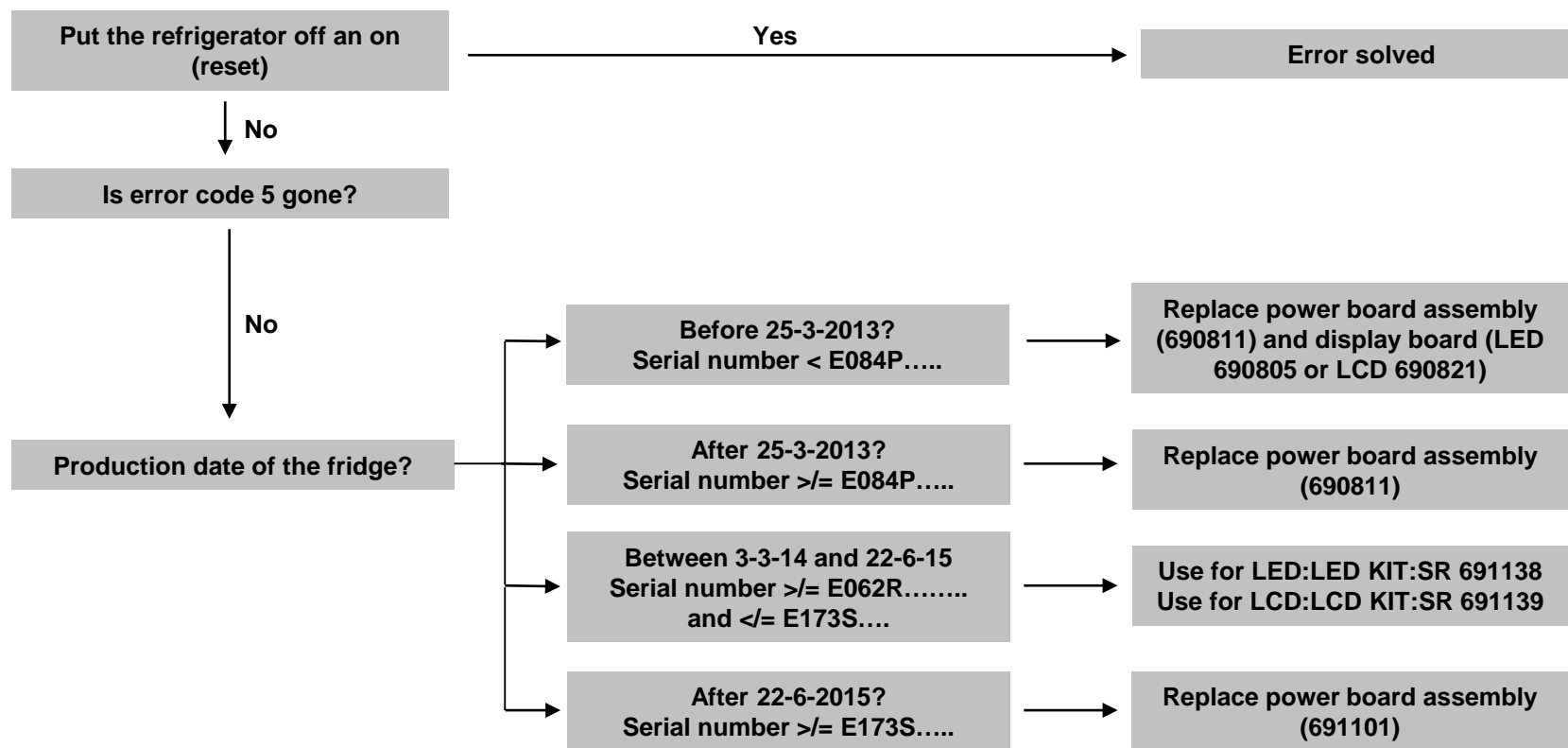
!!! Note: put fridge off when measuring the impedance off the heater !!!



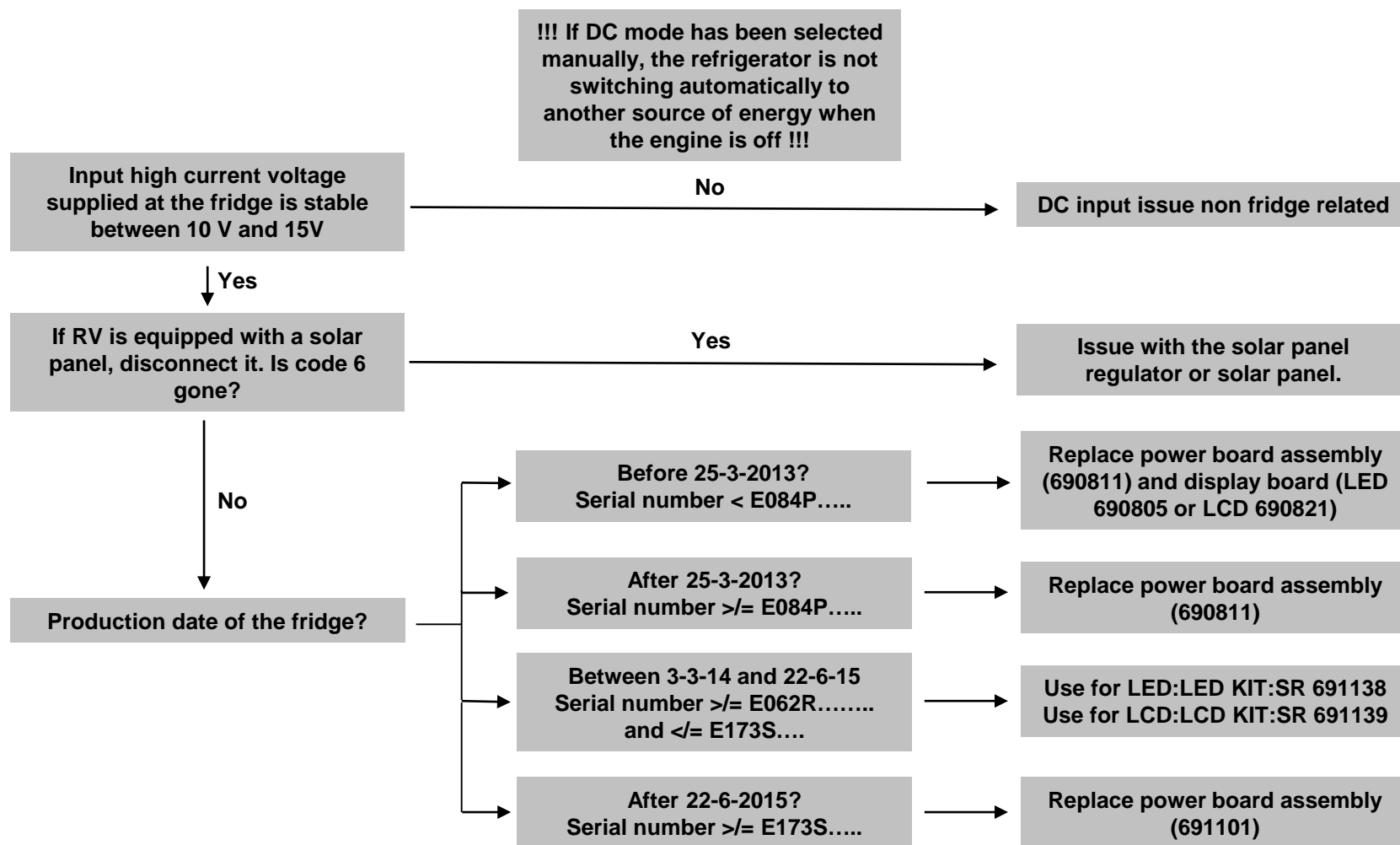
Error code 4: DC heater is off when it should be on



Error code 5: DC heater is ON when it should be OFF.

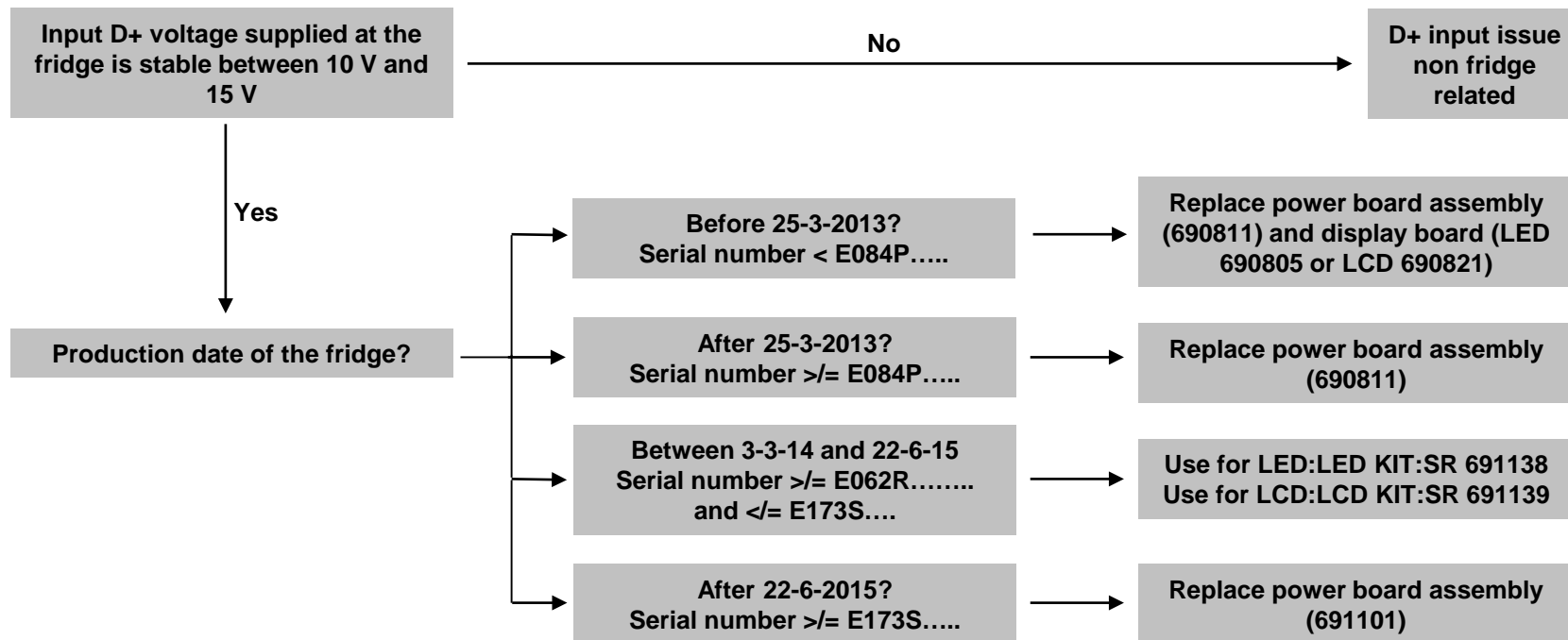


Error code 6: DC high voltage is out of range (lower than 10 V or higher than 15 V)



Error code 7: No “engine run” signal is present and control is in Manual DC mode.

!!! To know if D+ polarity is good, select manually DC mode and engine off. If no error code occurs, that means that the D+ input is reversed. Ensure power supply is capable to supply correct amperage !!!

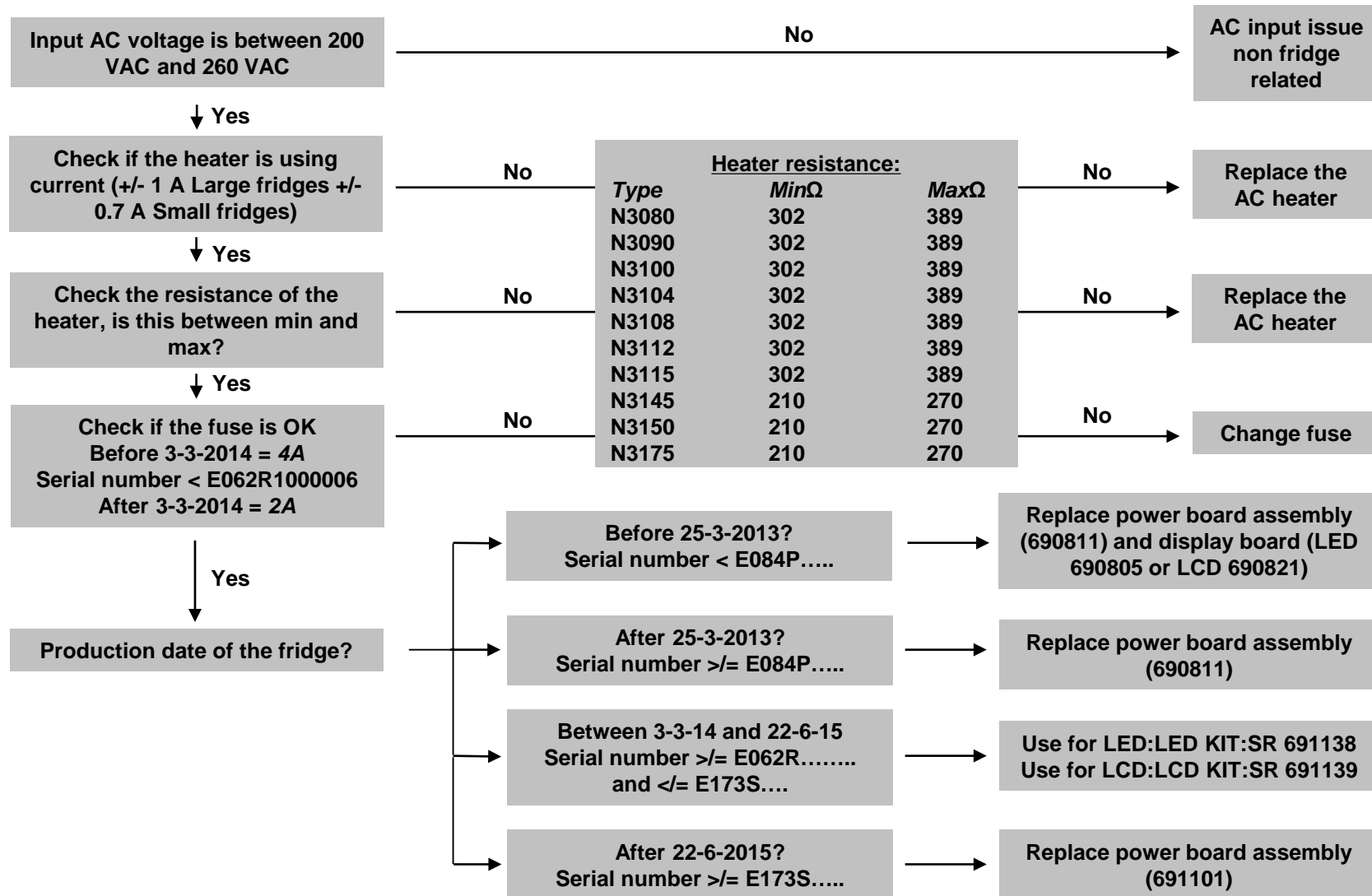


!!!Note: put fridge off when measuring resistance off the heater!!!

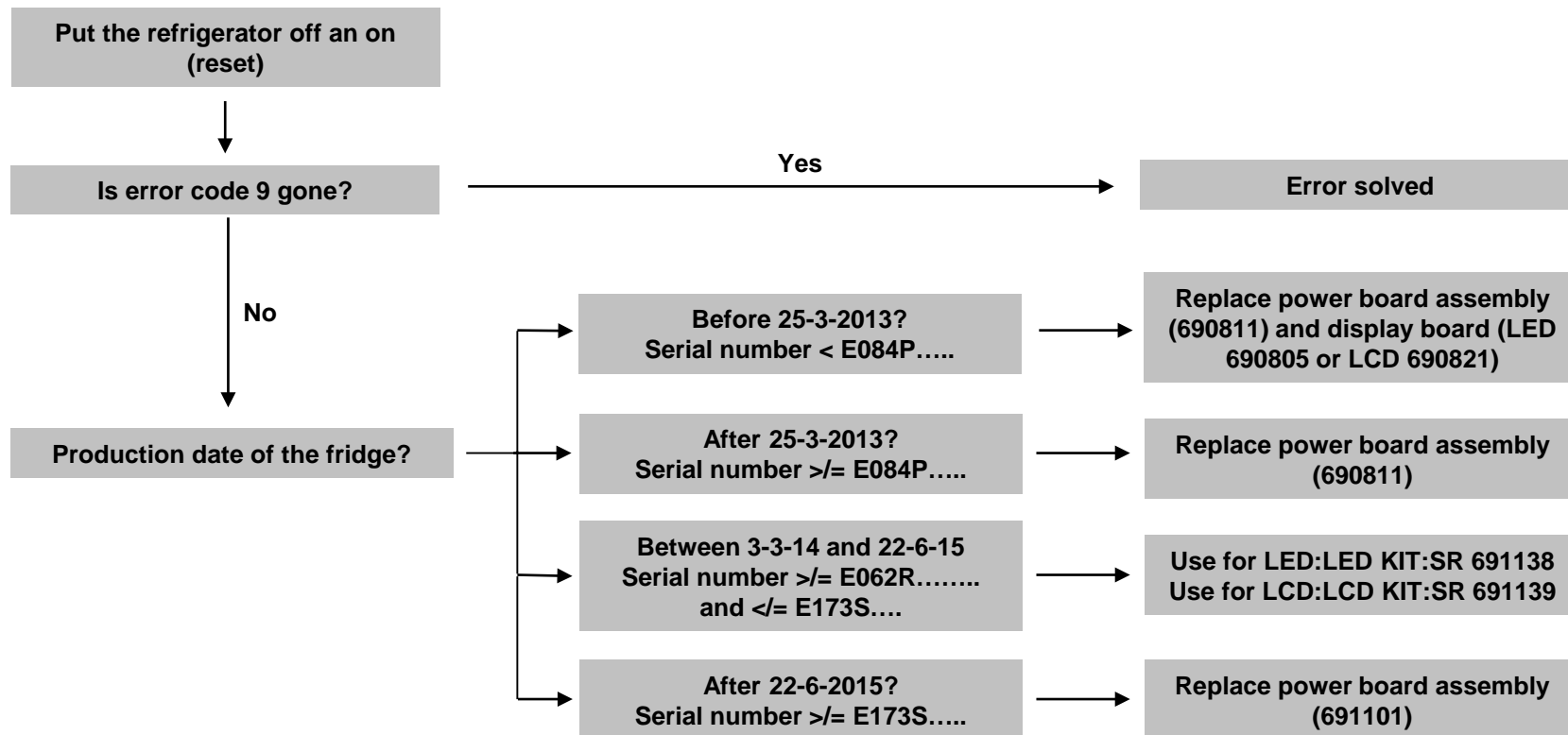


N3000 - series

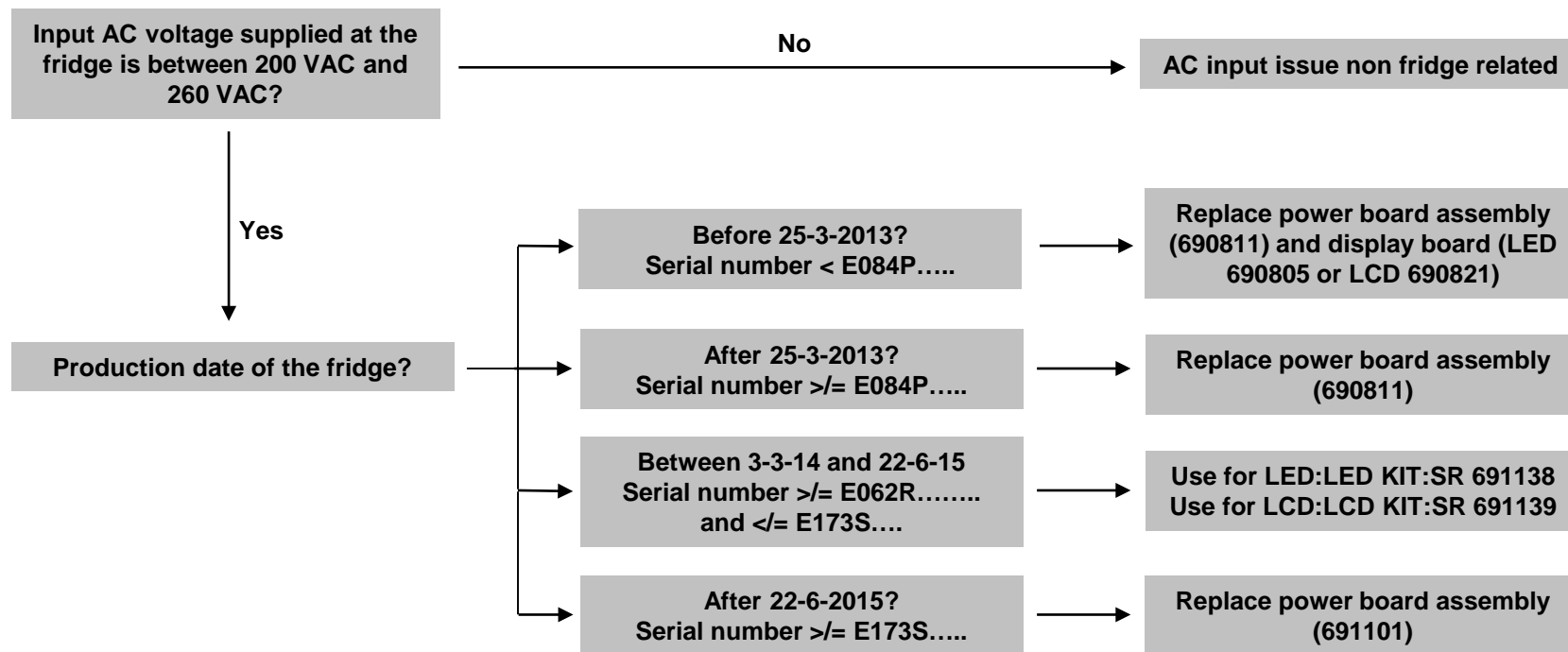
Error code 8: AC heater current is measured to be 75% below nominal current.



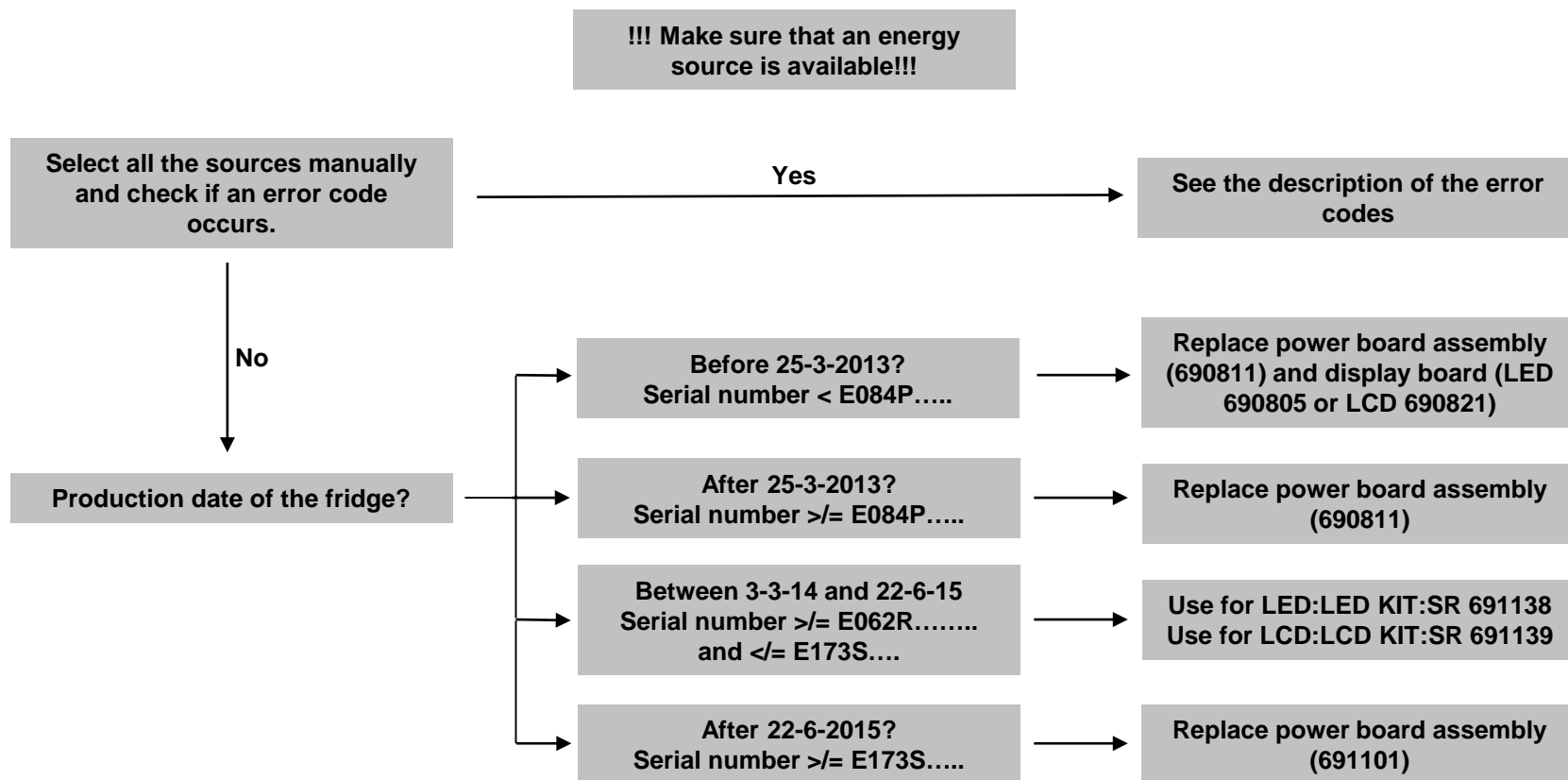
Error code 9: AC heater is ON when it should be OFF



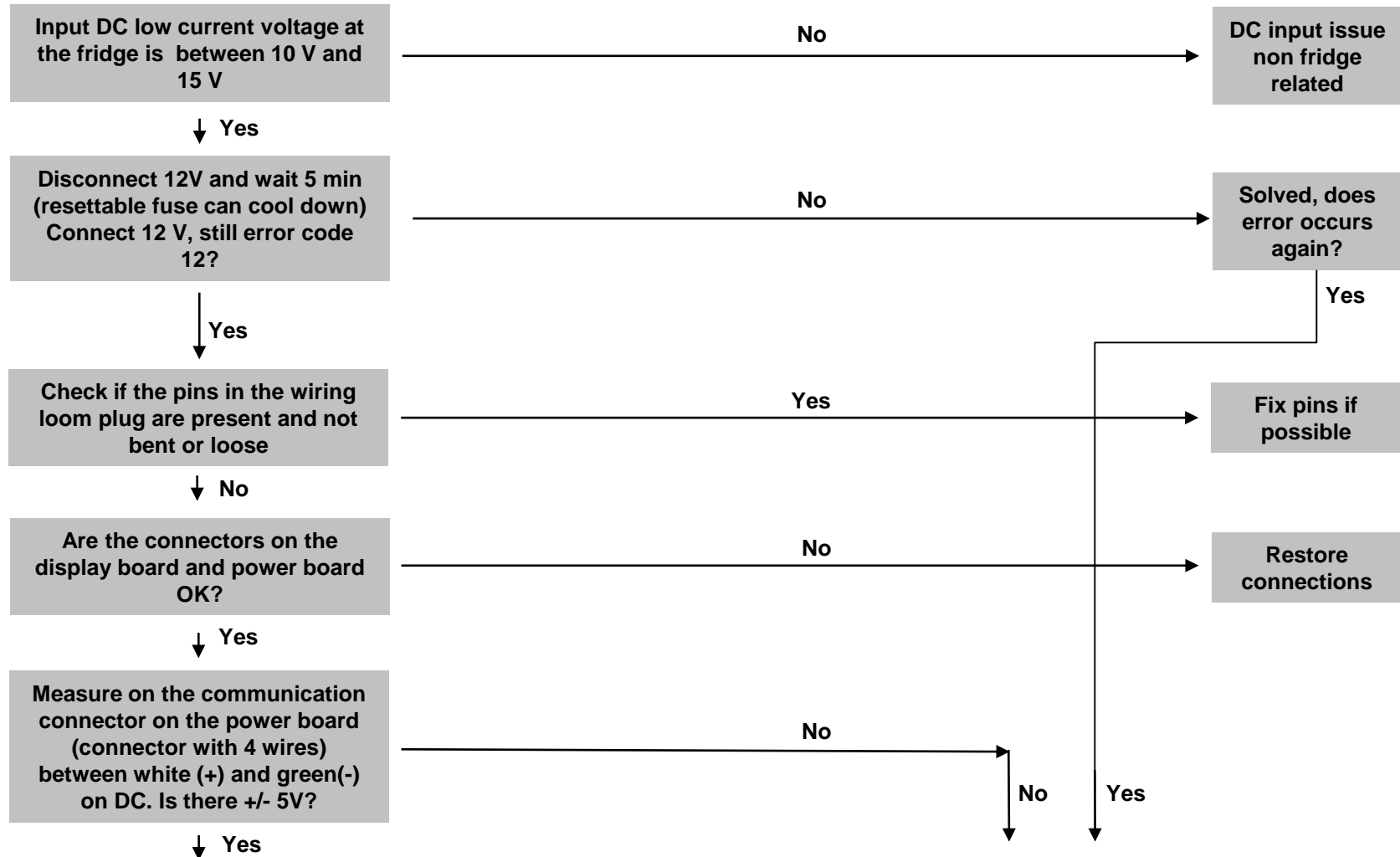
Error code 10: AC mains supply is out of range



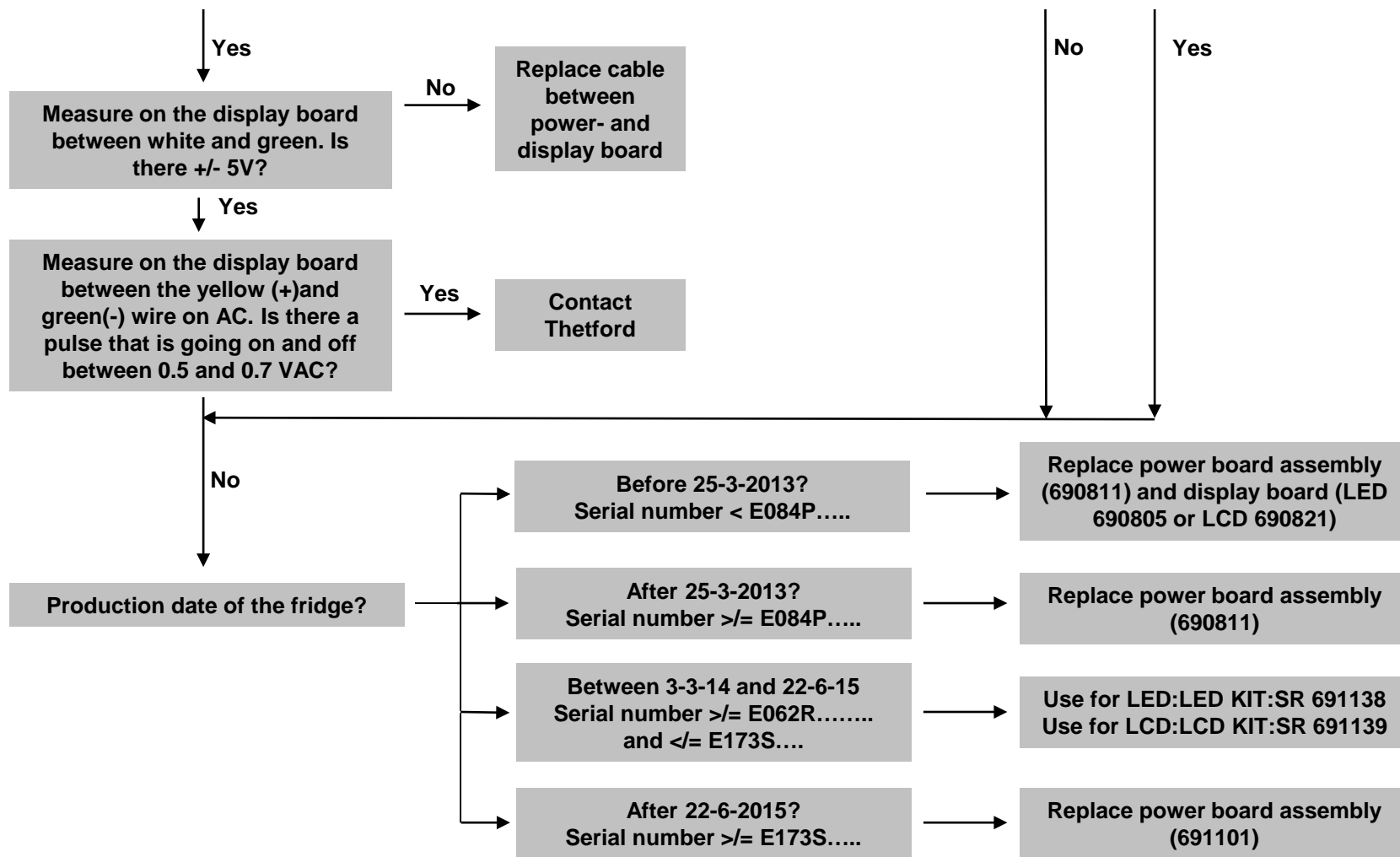
Error code 11: No energy source is available and control is in AUTO mode (LCD only)



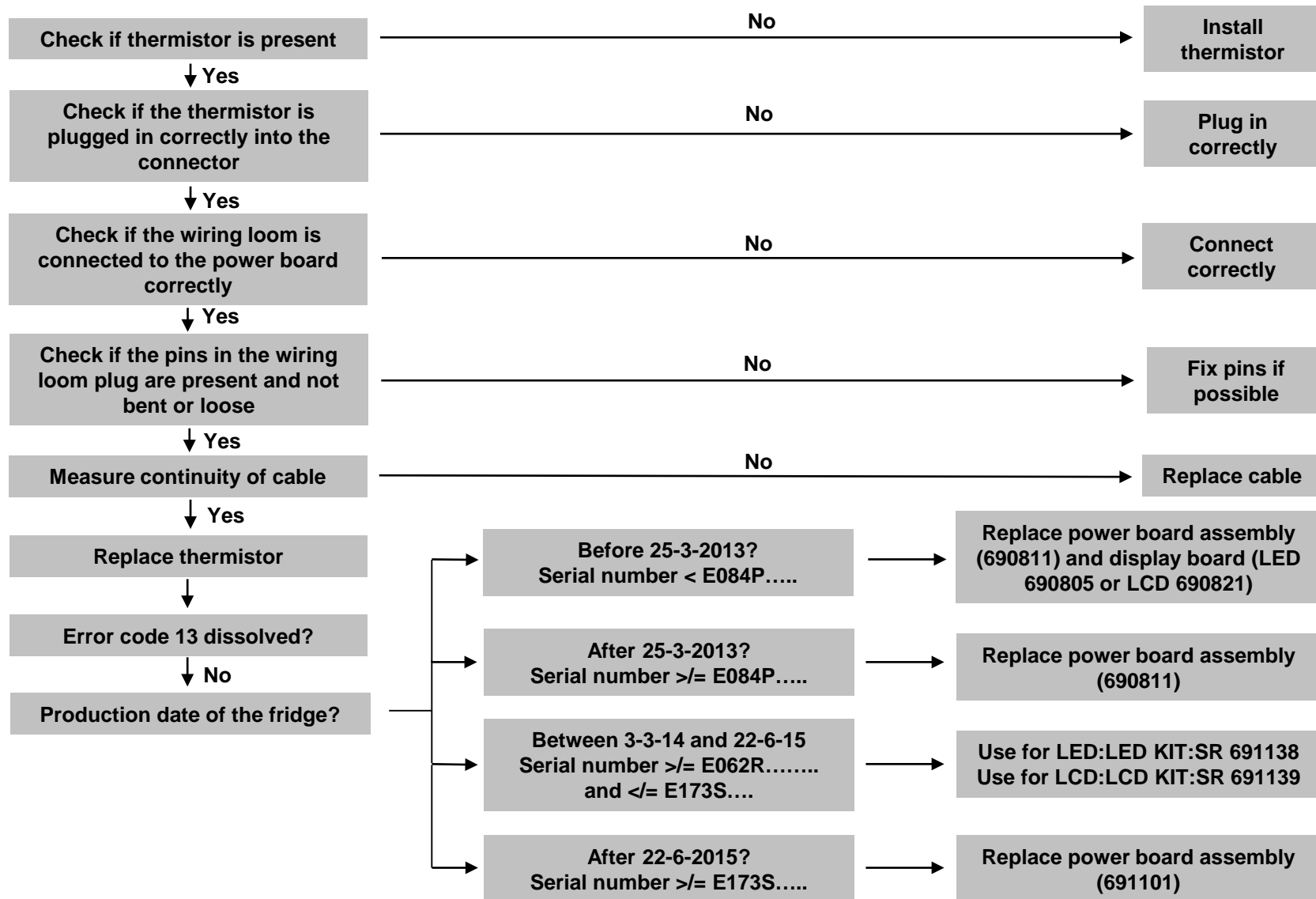
Error code 12: Display board and power board lose communication with each other.



Error code 12: Display board and power board lose communication with each other.

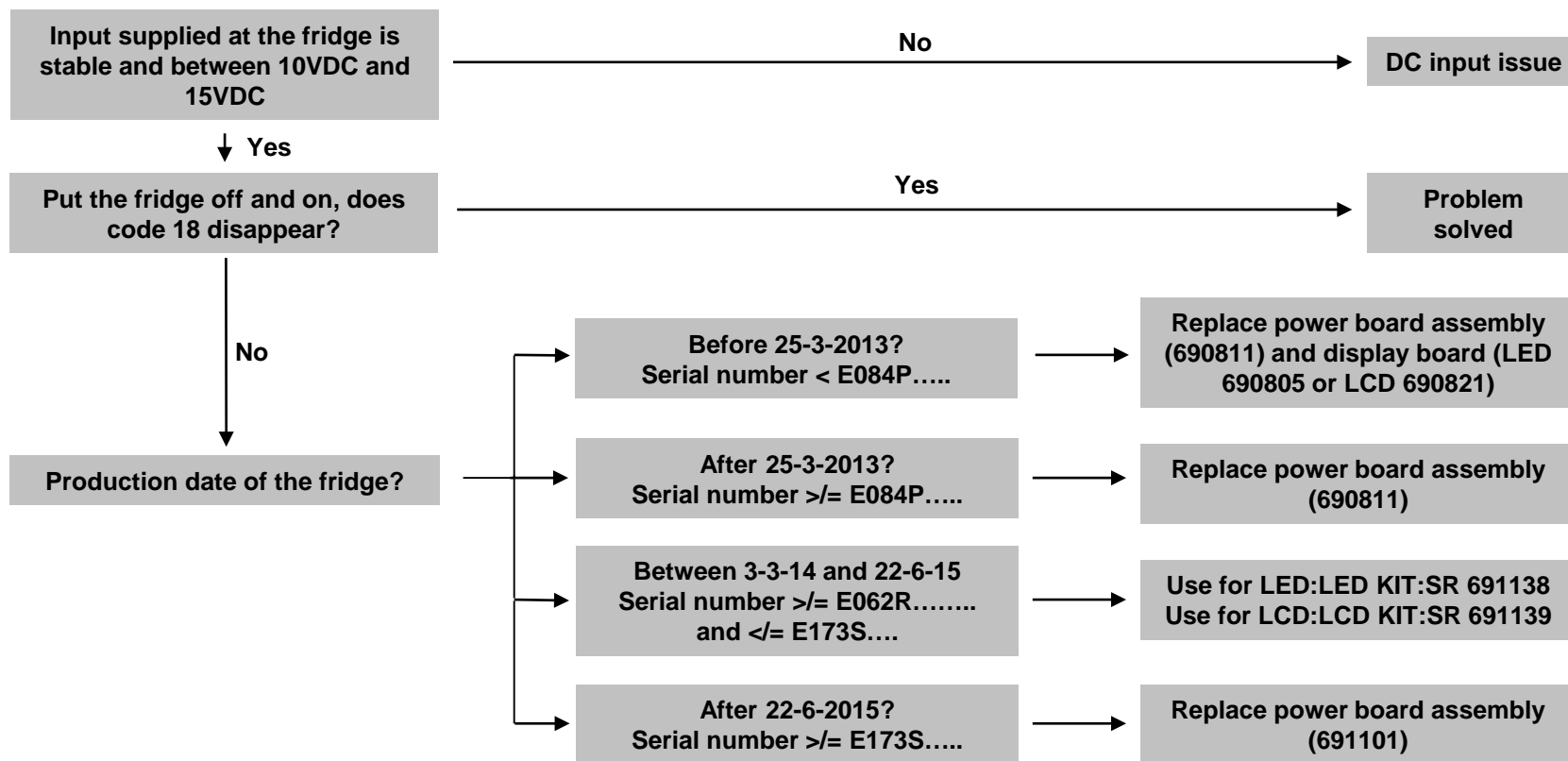


Error code 13: Thermistor fails; control automatically switches to Backup Operation System



Error code 18: Problem with starting up the fridge.

This could only be a problem when the fridge is longer than 2 minutes in operation. Only within those 2 minutes this code is possible.

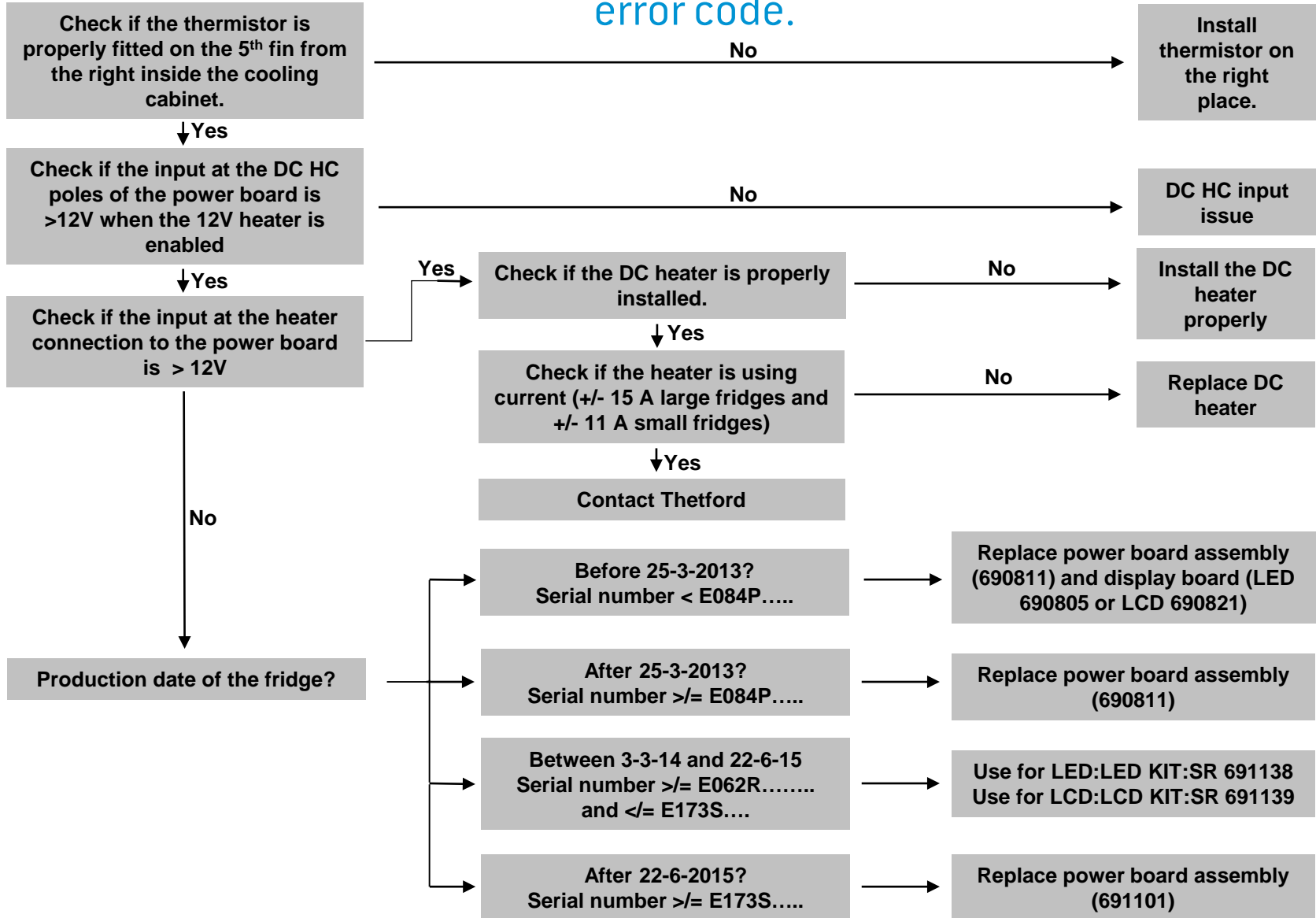


!!! Do the testing of the fridges
on the manual mode of this
source !!!



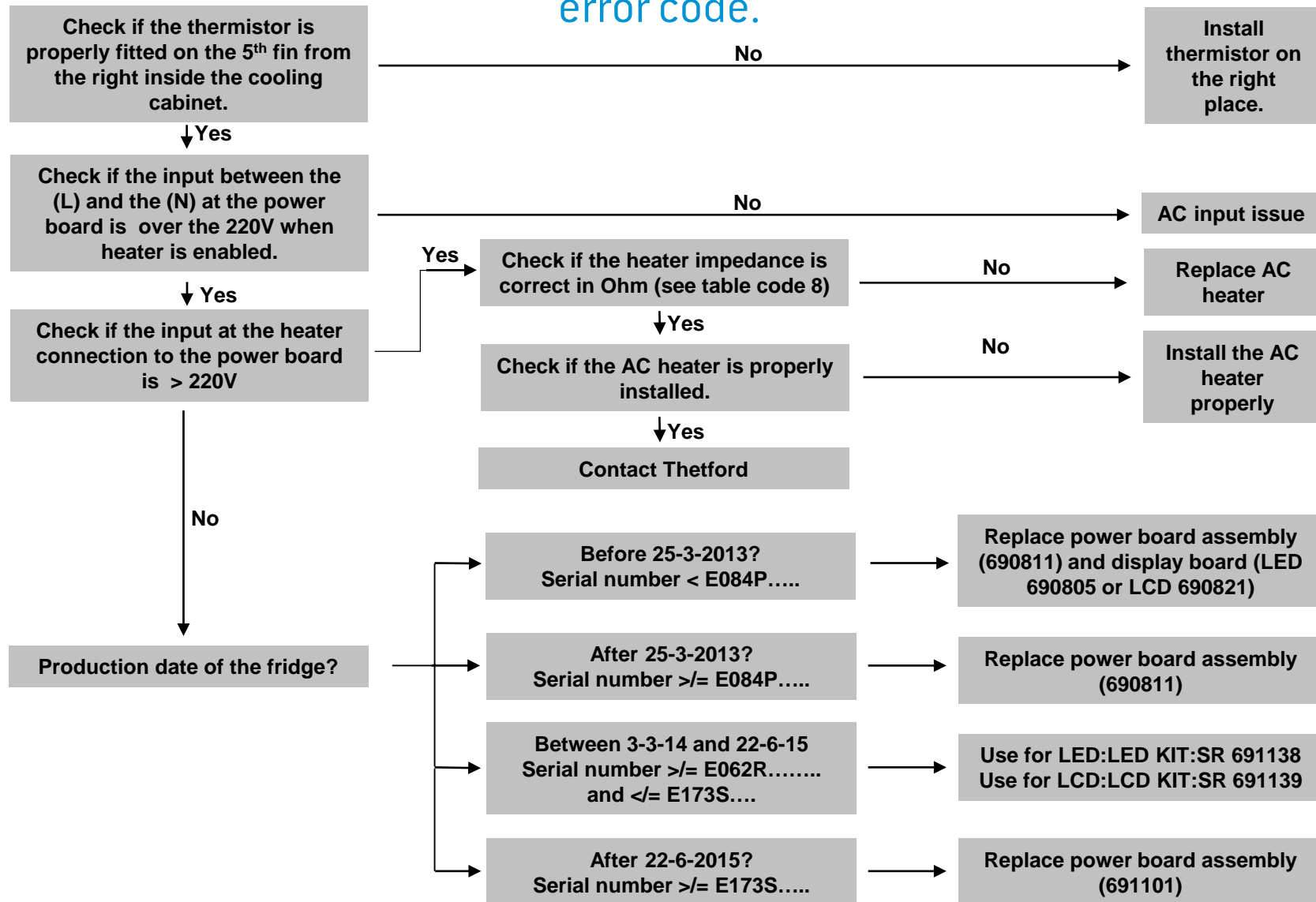
N3000 - series

Inadequate performance on 12 VDC source and no error code.

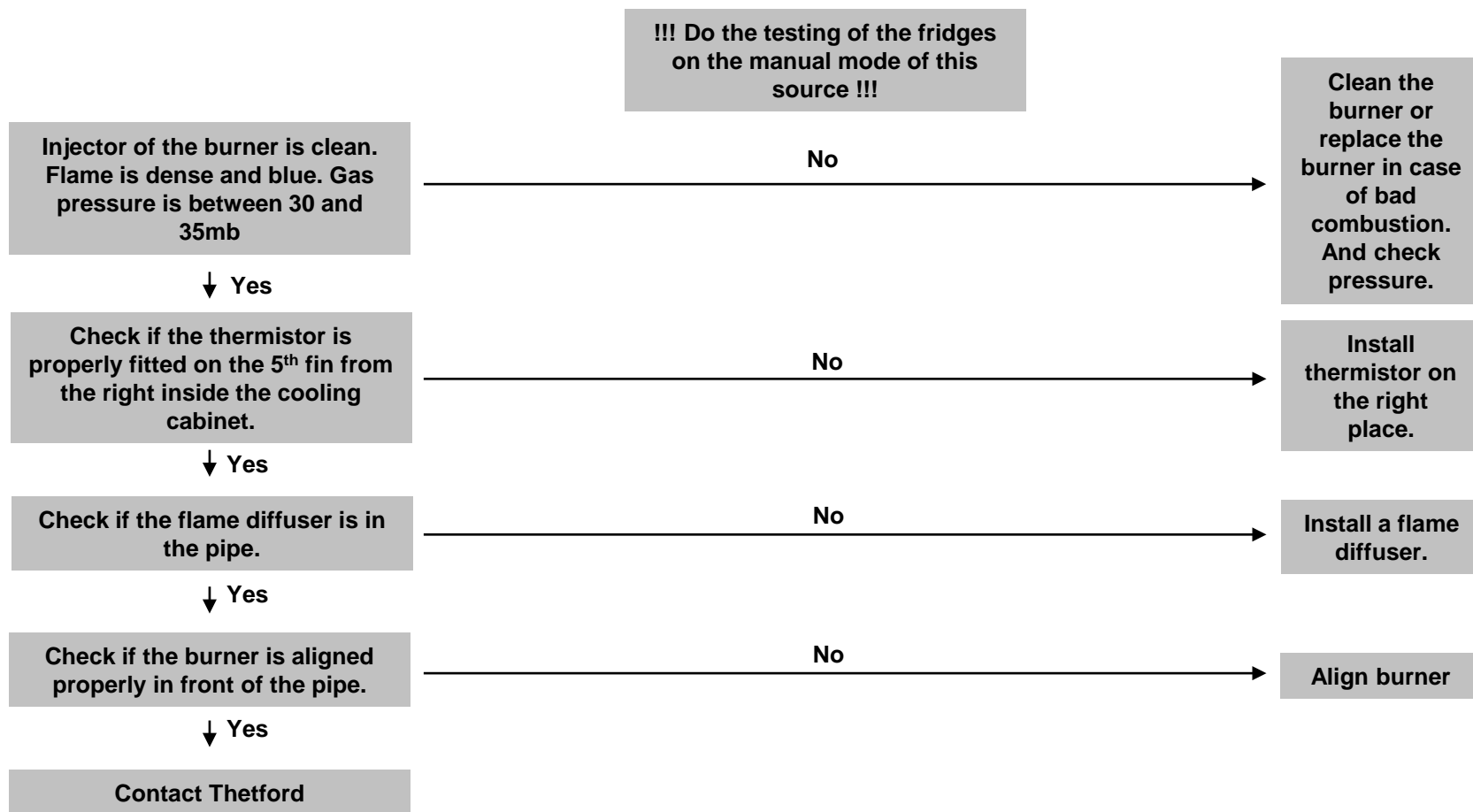


**!!! Do the testing of the fridges
on the manual mode of this
source !!!**

Inadequate performance on 230 V source and no error code.



Inadequate performance on gas source and no error code.



Appendix: Wiring diagram

